

Comparison of clinical performance of antigen based-enzyme immunoassay (EIA) and major outer membrane protein (MOMP)-PCR for detection of genital *Chlamydia trachomatis* infection

Mahmoud Nateghi Rostami¹ Ph.D., Batool Hossein Rashidi² M.D., Fatemeh Aghsaghloo³ M.Sc., Razieh Nazari³ Ph.D.

1. Department of Microbiology and Immunology, Faculty of Medicine, Qom University of Medical Sciences, Qom, Iran.
2. Department of Obstetrics and Gynecology, Vali-Asr Reproductive Health Research Center, Tehran University of Medical Sciences, Tehran, Iran.
3. Department of Microbiology, Islamic Azad University, Qom Branch, Qom, Iran.

Abstract

Background: *Chlamydia trachomatis* is the most common sexually transmitted bacterial pathogen worldwide. Early detection and treatment of *C.trachomatis* genital infection prevent serious reproductive complications.

Objective: Performances of enzyme immunoassay (EIA) and major outer membrane protein (MOMP)-polymerase chain reaction (PCR) for diagnosis of genital *C.trachomatis* infection in women were compared.

Materials and Methods: In this cross sectional study a total of 518 women volunteers were included (33.67±8.3 yrs) who had been referred to Gynecology clinics of Qom province, Iran, were included. Endocervical swab specimens were collected to detect lipopolysaccharide (LPS) antigen in EIA and to amplify MOMP gene of *C.trachomatis* in PCR. Results were confirmed using *ompI* nested-PCR. Sensitivity, specificity, positive (PPV) and negative predictive values (NPV) were calculated for performance of the tests. Odds ratios were determined using binary logistic regression analysis.

Results: In total, 37 (7.14%) cases were positive by EIA and/or MOMP-PCR. All discrepant results were confirmed by nested-PCR. Sensitivity, specificity, PPV and NPV values of EIA were 59.46%, 100%, 100% and 96.98%, and those of MOMP-PCR were 97.30%, 100%, 100%, 99.79%, respectively. Reproductive complications including 2.7% ectopic pregnancy, 5.4% stillbirth, 5.4% infertility, and 10.8% PROM were recorded. The risk of developing chlamydiosis was increased 4.8-fold in volunteers with cervicitis ($p<0.05$; OR 4.80; 95% CI 1.25-18.48).

Conclusion: *C.trachomatis* infection should be regarded in women of reproductive ages especially those with cervicitis. Primary screening of women by using the low cost antigen-EIA is recommended; however, due to the low sensitivity of Ag-EIA, verification of the negative results by a DNA amplification method is needed.

Key words: *Chlamydia trachomatis*, Pregnancy complications, Enzyme immunoassay, Nested PCR.

Corresponding Author:

Mahmoud Nateghi Rostami, Center for Research and Training in Skin Diseases and Leprosy (CRTSDL), Tehran, Iran PO.Box 14515-6383.
Email: Rostami52@yahoo.com
Tel: (+98) 21 88970657

Received: 14 November 2015

Revised: 17 February 2016

Accepted: 20 April 2016

Introduction

According to World Health Organization (WHO) 350-500 million new cases of curable sexually transmitted infections (STIs), including *Treponema pallidum*, *Neisseria gonorrhoeae*, *Chlamydia trachomatis* (*C.trachomatis*) and *Trichomonas vaginalis*, occur annually throughout the world. More than 1 million people acquire a STI every day, with the largest proportion in the south and south-east Asia. More than 30 bacterial, viral and parasitic pathogens are causative agents of

STIs. Currently *C.trachomatis* is the most common sexually transmitted bacterial pathogen worldwide (1). *C.trachomatis* is an obligate intracellular bacterium that infects mucosal surfaces of the cervix, urethra, rectum, nasopharynx, and conjunctiva. Genital chlamydiosis is the most frequently reported sexually transmitted disease (STD) in the United States with an increasing rate of infection more commonly in women than in men which was reported in the last 5 years(2).

In Iran, the estimated prevalence of *Chlamydia* infection seems to be more than 10% in general population, and up to 30% in

specific high-risk groups, such as sex workers (3). High-risk sexual behaviors, low socioeconomic levels, young age, specific symptoms such as mucopurulent discharge are among important risk factors for chlamydial infection (4-7). The complications of chlamydial infection in women include the facilitation of HIV transmission, ocular infections of the newborn, disseminated infection, ectopic pregnancy, preterm labor, and pelvic inflammatory diseases (PIDs) which is one of the major causes of infertility (8, 9). However, *C. trachomatis* genital infections are often asymptomatic in women. Early detection of *C. trachomatis* genital infection to avoid serious complications would be valuable since effective treatment is available and with prompt antibiotic treatment most of these complications might be prevented.

The Center for Disease Control and Prevention recommends *Chlamydia* screening for all sexually active women less than 26 years old. Evidences showed that in areas where the screening programs were implemented, the prevalence of infection and rate of PIDs were decreased (2). Traditionally, the gold standard for the identification of *C. trachomatis* infections is tissue culture, which is a time consuming and labor-intensive method and requires trained staff. Common serological techniques in the diagnosis of *Chlamydia* antibodies have some pitfalls, including cross reactivities and long persistence of IgG antibody even after treatment and cure (10, 11).

In recent years, several nucleic acid amplification techniques and polymerase chain reaction (PCR)-based methods have become available which provide improved sensitivity for diagnosis of *C. trachomatis* infection. Although different molecular amplification tests are increasingly developed, their use as routine screening tests for *C. trachomatis* is limited by the high cost and need of facilities. Antigen-based EIA might be an affordable alternative since it is less technically complex and less costly compared to DNA amplification techniques and provides more accuracy than antibody detection using serological techniques.

Since there have been no previous study dealing with chlamydial detection by antigen-

EIA in Iran, in this study performance of Ag-EIA and conventional PCR in detection of *C. trachomatis* infection in endocervical swab specimens is reported.

Materials and methods

Study population, ethical considerations and sampling

The study protocol conforms to the ethical guidelines of the 1975 Declaration of Helsinki and has been approved by Ethical Committee of Qom University of Medical Sciences. A written informed consent was obtained from each volunteer. In this cross sectional study, from May 2013 to April 2014, a total of 518 women who admitted to gynecology clinics of Qom province, Iran, for Pap smear or regular checkup were randomly recruited.

Inclusion criteria were age range between 18-50 years and no administration of systemic or topical antibiotics during last one month. Each volunteer was examined by gynecologist and demographic data, history and clinical signs were recorded in a questionnaire form. Swab samples were collected from endocervical canal under aseptic conditions. First swab was placed in a tube containing sterile PBS and stored at 4°C until use for EIA; and the second swab was transferred to sterile PBS, pH=7.4, and kept at -20°C for PCR.

EIA for detection of *Chlamydia trachomatis* antigen

The level of *C. trachomatis* antigen was measured by EIA method using MicroTrak®II *Chlamydia* EIA kit (Trinity Biotech, Ireland). Specimen treatment solution was used to elute lipopolysaccharide (LPS) antigen from the genital swabs in the assay procedure. After adding 1 ml of specimen treatment solution to patient swabs, specimens and controls tubes were heated in a preheated block (100°C) for 15 min. The microwell plates were coated with 100 µl of rabbit chlamydial anti-LPS mAb in PBS, pH=7.2, and 100 µl of genital discharge samples or controls were added and plates were incubated for 90 min at 37°C.

Next, 100 µl of peroxidase-labeled anti-rabbit IgG was added and plates were incubated at 37°C for 30 min. 100 µl of

3,3',5,5'-tetramethyl benzidine (TMB) substrate (Sigma, St. Louis, MO, USA) was added and plates were incubated at 37°C for 30 min and then the reaction was stopped with 100 µl of 0.5 M H₂SO₄ solution (Merck, Darmstadt, Germany).

The plates were washed after each step of incubation using PBS+0.05% (v/v) Tween 20 (Sigma, St. Louis, MO, USA). The plates were read at 450 nm using a reader (BioTek, Winooski, VT, USA). The mean optical densities (ODs) of triplicate samples represent the differences between the ODs of test and background wells. Cutoff value was determined by adding the mean of negative control absorbance values to a constant. Samples with absorbance's equal to or greater than the cutoff value were considered positives. Based on the information provided with the kit, common genital organisms like *Candida* spp., *T.vaginalis*, *Neisseria* spp., Enterobacteriaceae family, and Gram positive cocci have absorbance values below the cutoff.

DNA extraction

DNA extraction was carried out on the endocervical samples by using AccuPrep® Genomic DNA Extraction Kit (BIONEER, South Korea). Briefly, samples in 1.5 ml tubes were centrifuged 5 min at 7000 rpm, then 20 µl of proteinase K was added to the pellet followed by adding 200 µl of GC binding buffer, tubes were incubated at 60°C water bath for 10 min. Then 100 µl of absolute isopropanol was added and the contents were transferred to Binding tubes. Tubes were washed with 500 µl of W1 washing buffer at 8000 rpm for 1 min, then with W2 washing buffer at 12000 rpm for 1 min. Finally, 50 µl of Elution buffer (EL) was added to the tubes and centrifuged at 8000 rpm for 1 min and elutes were collected as DNA and kept at -20°C until use.

MOMP-based PCR

For identification of *C. trachomatis*, major outer membrane protein (MOMP) target gene of the DNA samples was amplified using primers Ch-F 5'-CCTgTggggAATCCTgCTgAA-3' and Ch-R 5'-gTCgAAAACAAgTCACC ATAgTA-3', yielding a 240 bp fragment (CinnaGene, Tehran, Iran). Amplification of

the target gene was carried out in a total volume of 25 µl containing 2.5 µl 10× PCR buffer, 1.5 mM MgCl₂, 0.5 µl of each primer (25 pmol/ml), 0.2 mM of each dNTPs, 0.5 U *Taq* DNA polymerase (all from Fermentas Life Sciences, York, UK) and 1 µM (1-3 µL) of DNA. The cycling program on thermal cycler (Eppendorf Mastercycler, Germany) was initiated by early denaturation of 5 min at 95°C, followed by 35 cycles of 94°C for 60 sec, 58°C for 60 sec, and 72°C for 60 sec, then by a final extension step at 72°C for 7 min. PCR products were electrophoresed on 1.5% agarose gel and visualized by staining with ethidium bromide under a UV Gel Documentation System (UVItect, Cambridge, UK).

ompI gene nested-PCR

C.trachomatis ompI gene was targeted in nested-PCR amplification. The primers used for generating an approximately 1100 bp fragment of the *ompI* gene were Ex-p1: 5'-ATgAAAAACTCTTgAAATCgg-3' and Ex-p2: 5'-TTTCTAgATTTTCATCTTgTT-3' (Cinna Gene, Tehran, Iran). The primary PCR reaction was performed in a final volume of 50 µl containing 10 µl of DNA, 0.125 µl of each 200 pm external primers, 0.5 µl of 5 µM/µl *Taq* DNA polymerase, 5 µl of 25 mM MgCl₂, 0.8 µl of 12.5 mM dNTPs, and 5 µl of 10× PCR buffer (all from Fermentas Life Sciences, York, UK).

The PCR amplification on Eppendorf Mastercycler, was started with 10 min of denaturation at 95°C and continued with 49 cycles of amplification consisted of a denaturation step at 95°C for 1 min, an annealing step at 48°C for 3 min, and extension step at 72°C for 3 min. Then, 10 µl of a 1:10 dilution in distilled water of the primary PCR product was used for nested-PCR. The reaction was performed in a final volume of 50 µl containing the same PCR reaction mixture except that primers sequences were as follows: In-p1 5'-TTTCTAgATTTTCATCTTgTT-3' and In-p2 5'-TCCTTgCAAgCTCTgCCTgTggggAATCCT-3' as nested PCR primers (CinnaGene, Tehran, Iran). The amplification condition was the same as that of the primary *ompI* PCR. The primers generate an approximately 1000 bp fragment. The PCR products were analyzed

by 1.5% agarose gel electrophoresis and visualized by staining with ethidium bromide under a UV Gel Documentation System (UVIttec, Cambridge, UK).

Statistical analysis

Statistical analysis was performed by using SPSS version 18 (SPSS Inc., Chicago, IL, USA) and GraphPad Prism version 5.01 (GraphPad Software Inc., La Jolla, CA, USA) softwares. Pearson χ^2 and Fisher's exact tests were used for the different comparisons. Using univariate logistic regression analysis odds ratios (OR) of different risk factors were calculated. Sensitivity, specificity, positive predictive value (PPV) and negative predictive value (NPV) were calculated for reporting performance of the tests. $P \leq 0.05$ was considered as significant.

Results

The mean \pm SD age of the women was 33.67 \pm 8.30 years, and most of the women were assigned to the 30-39 years age group, with 38% of the total recorded volunteers. As little as 3.5% of the volunteers were suffering from noncommunicable chronic diseases such as diabetes. More than 80% of the volunteers chose at least one of the contraceptive methods, including natural contraception as the most frequent method. About half of the volunteers had malodorous discharge, and about 40% had itching and dyspareunia, and history of abortion was seen in approximately 25% of the volunteers. Other complications such as ectopic pregnancy, prematurity, and infertility also were seen in the volunteers.

In EIA the cutoff value was determined 0.345. OD values between 0.3-0.344 were considered as suspected results and the samples were re-examined (Figure 1). Among 518 volunteers, 37 (7.14%) have EIA and/or MOMP PCR positive results which considered

as chlamydiosis, and 481 (92.86%) have negative results which considered as non-chlamydiosis cases. All positive EIA samples, except one, showed specific MOMP band in analysis with PCR method (Figure 2). Positive results of EIA and all discrepant results were confirmed by nested-PCR (Figure 2).

As it is shown in table I, one specimen with a false-negative PCR result was positive in nested-PCR assay. Fifteen of PCR-positive, EIA negative specimens were reamplified and analysed by using nested-PCR and the results remained positive. Sensitivity, specificity, PPV and NPV of EIA were 59.46% (95% confidence interval (CI) 42.10% to 75.23%), 100% (95% CI 99.23% to 100%), 100% (95% CI 84.43% to 100%) and 96.98% (95% CI 95.06% to 98.30%), respectively. Sensitivity, specificity, PPV and NPV of MOMP PCR were 97.30% (95% CI 85.79% to 99.55%), 100% (95% CI 97.87% to 100%), 100% (95% CI 90.17% to 100%), and 99.79% (95% CI 98.84% to 99.97%), respectively.

Among the positive chlamydiosis patients, 13.5% had cervicitis, 37.8% had malodorous discharge, and 48.6% had itching. In addition, 2.7% reported ectopic pregnancy, 5.4% stillbirth, 5.4% infertility, 10.8% PROM and 10.8% curettage. Pearson Chi-square analysis showed a significant difference between chlamydiosis and non-chlamydiosis volunteers with regard to cervicitis ($p=0.008$). Univariate logistic regression analysis showed that the risk of developing chlamydiosis was increased 4.8-fold in the volunteers with cervicitis (Table II) ($p<0.05$; OR 4.80; 95% CI 1.25-18.48).

Using backward-Wald analysis, cervicitis remained an independent risk factor for the development of chlamydiosis ($p=0.018$; OR 4.75; 95% CI 1.08-18.13). The risk of developing chlamydiosis was decreased in the volunteers with low abdominal pain ($p<0.05$; OR 0.32; 95% CI 0.13-0.82).

Table I. Comparison of the results of EIA and MOMP PCR analysis

Test	PCR		Total
	Positive	Negative	
EIA			
Positive	16 (3.0)	1 (0.2)	17 (3.3)
Negative	21 (4.1)	480 (92.7)	501 (96.7)
Total	37 (7.1)	481 (92.9)	518 (100.0)

Data are presented as n(%).

Performance of EIA and PCR in chlamydial infection

Table II. Results of regression analysis in two women groups categorized based on genital *C. trachomatis* infection

Characteristics	Women number (%)			p-value	OR	95% CI
	Non-chlamydiosis	Chlamydiosis	Total			
Pregnancy						
No *	474 (98.5%)	37 (100.0%)	511 (98.6%)	-----	-----	-----
Yes	7 (1.5%)	0 (0.0%)	7 (1.4%)	0.999	0.000	0.000
Contraception						
No *	79 (16.4%)	6 (16.2%)	85 (16.4%)	-----	-----	-----
Yes	402 (83.6%)	31 (83.8%)	433 (83.6%)	0.974	0.985	0.398-2.439
Method of contraception						
Condom *	84 (17.5%)	8 (21.6%)	92 (21.2%)	-----	-----	-----
Natural family planning	142 (29.5%)	9 (24.3%)	151 (34.9%)	0.588	1.133	0.721-1.781
IUD	44 (9.1%)	0 (0.0%)	44 (10.2%)	0.398	1.198	0.788-1.821
OCP	34 (7.1%)	4 (10.8%)	38 (8.8%)	0.130	0.700	0.441-1.111
Vasectomy	23 (4.8%)	1 (2.7%)	24 (5.5%)	0.053	1.516	0.958-2.172
Tubectomy	59 (12.3%)	4 (10.8%)	63 (14.5%)	0.588	1.133	0.721-1.781
Contraceptive injection	6 (1.2%)	2 (5.4%)	13 (3.0%)	0.398	1.198	0.788-1.821
Combination	10 (2.1%)	3 (8.1%)	8 (1.9%)	0.130	0.700	0.441-1.111
None	79 (16.4%)	6 (16.2%)	85 (16.4%)	0.053	1.516	0.958-2.172
Antibiotic administration						
No *	377 (78.4%)	29 (78.4%)	406 (80.4%)	-----	-----	-----
Yes	104 (21.6%)	8 (21.6%)	112 (19.6%)	0.986	0.991	0.359-2.739
History of chronic diseases						
No *	463 (96.3%)	37 (100.0%)	500 (96.5%)	-----	-----	-----
Yes	18 (3.7%)	0 (0.0%)	18 (3.5%)	0.999	0.000	0.000
Number of kids						
0 *	60 (12.5%)	6 (16.2%)	66 (12.7%)	-----	-----	-----
1-2	250 (52.0%)	21 (56.8%)	271 (52.3%)	0.719	0.840	0.325-2.172
3-4	124 (25.8%)	10 (27.0%)	134 (25.9%)	0.690	0.806	0.280-2.323
≥ 5	47 (9.8%)	0 (0.0%)	47 (9.1%)	0.997	0.000	0.000
Dysuria						
No *	455 (94.6%)	34 (91.9%)	489 (94.4%)	-----	-----	-----
Yes	26 (5.4%)	3 (8.1%)	29 (5.6%)	0.595	0.552	0.062-4.948
Malodorous discharge						
No *	264 (54.9%)	23 (62.2%)	287 (55.4%)	-----	-----	-----
Yes	217 (45.1%)	14 (37.8%)	231 (44.6%)	0.798	0.884	0.345-2.267
Cervicitis						
No *	462 (96.0%)	32 (86.5%)	494 (95.4%)	-----	-----	-----
Yes	19 (4.0%)	5 (13.5%)	24 (4.6%)	0.022	4.803	1.250-18.482
Low abdominal pain						
No *	221 (45.9%)	22 (59.5%)	243 (46.9%)	-----	-----	-----
Yes	260 (54.1%)	15 (40.5%)	275 (53.1%)	0.018	0.323	0.127-0.822
Dyspareunia						
No *	280 (58.2%)	22 (59.5%)	302 (58.3%)	-----	-----	-----
Yes	201 (41.8%)	15 (40.5%)	216 (41.7%)	0.064	1.247	0.497-3.130
Itching						
No *	302 (62.8%)	19 (51.4%)	321 (62.0%)	-----	-----	-----
Yes	179 (37.2%)	18 (48.6%)	197 (38.0%)	0.416	1.457	0.589-3.609
Abortion						
No *	360 (74.8%)	30 (81.1%)	390 (75.3%)	-----	-----	-----
Yes	121 (25.2%)	7 (18.9%)	128 (24.7%)	0.366	0.546	0.147-2.024
Ectopic pregnancy						
No *	474 (98.5%)	36 (97.3%)	510 (98.5%)	-----	-----	-----
Yes	7 (1.5%)	1 (2.7%)	8 (1.5%)	0.730	1.561	0.124-19.665
Stillbirth						
No *	459 (95.4%)	35 (94.6%)	494 (95.4%)	-----	-----	-----
Yes	22 (4.6%)	2 (5.4%)	24 (4.6%)	0.267	2.712	0.467-15.755
Infertility						
No *	439 (91.3%)	35 (94.6%)	474 (91.5%)	-----	-----	-----
Yes	42 (8.7%)	2 (5.4%)	44 (8.5%)	0.874	1.230	0.095-15.907
Prematurity						
No *	467 (97.1%)	36 (97.3%)	503 (97.1%)	-----	-----	-----
Yes	14 (2.9%)	1 (2.7%)	15 (2.9%)	0.801	1.396	0.104-18.747
PROM						
No *	452 (94.0%)	33 (89.2%)	485 (93.6%)	-----	-----	-----
Yes	29 (6.0%)	4 (10.8%)	33 (6.4%)	0.065	3.121	0.933-11.693
Curettage						
No *	412 (85.7%)	33 (89.2%)	445 (85.9%)	-----	-----	-----
Yes	69 (14.3%)	4 (10.8%)	73 (14.1%)	0.753	0.740	0.114-4.809
Age (years)						
15-19	11 (2.3%)	1 (2.7%)	12 (2.3%)	-----	-----	-----
20-29	157 (32.6%)	11 (29.7%)	168 (32.5%)	0.691	1.118	0.643-1.944
30-39	184 (38.3%)	13 (35.1%)	197 (38.0%)	0.744	0.908	0.510-1.617
40-49	120 (24.9%)	10 (27.0%)	130 (25.1%)	0.406	1.305	0.697-2.442
≥ 50*	9 (1.9%)	2 (5.4%)	11 (2.1%)	0.521	1.665	0.705-1.662
Total	481 (92.9%)	37 (7.1%)	518 (100%)			

Using univariate binary logistic regression analysis OR of different risk factors were calculated.

* Reference group p-value of ≤0.05 considered to be significant.

OR= Odds Ration CI= Confidence Intervals

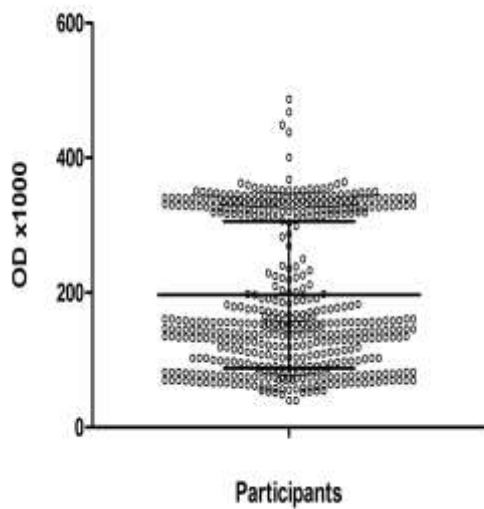


Figure 1. Scatter plot showing the ODs of samples in enzyme immune assay (EIA) for detection of *C. trachomatis* antigen (Resolution 300×300 dpi)

Discussion

As our knowledge, no data is available regarding the use of EIA in detection of *C. trachomatis* antigen in women of Iran. Most of the publications on the prevalence of *Chlamydia* infection in Iran is based on serologic evaluation of antibody (8). Because IgG antibody titers persist for several months after *Chlamydia* infections, positive serological tests may indicate previous infection not active chlamydiosis. In contrast, direct Ag-EIA techniques detect specific antigens which are shed during active infections and have less cross-reactivity than serological tests detecting antibodies. On the other hands, non-invasive DNA amplification techniques are helpful since they are not dependent on viable organisms, as needed in labor-intensive culture procedures.

In this study, positive results of EIA and all discrepant results were confirmed by nested-PCR. One sample showed a false-negative result in MOMP PCR which might be due to the presence of inhibitors in the specimen. 15 of samples showed false negative EIA results which were positive in nested-PCR. The current data shows that the sensitivity of EIA is low (59.46%) compared to MOMP-PCR

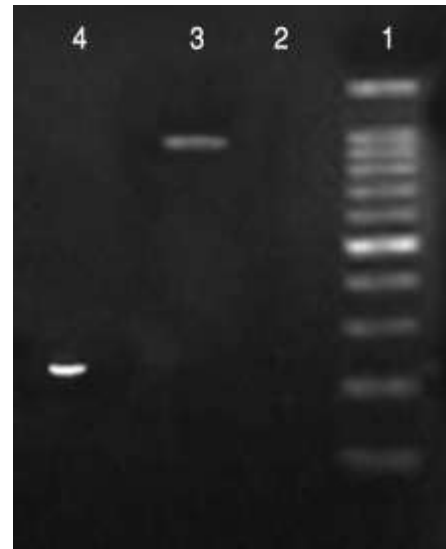


Figure 2. Electrophoresis of the amplification products of *Chlamydia* MOMP PCR and *omp1* nested-PCR (Resolution 300×300 dpi) Lane 1: 100 bp ladder; Lane 2: negative control; Lane 3: 1000 bp nested-PCR product; Lane 4: 240 bp MOMP PCR product.

(97.3%), the sensitivity of EIA is shown to be variable in different reports: from as low as 8.1% in endocervical swabs from 357 women between 16 and 41 years of age to 42.0% in endocervical swab specimens from 733 commercial sex workers, and up to 73% in a study of endocervical swabs from 109 women in Gaza (12-14). The investigation of the ability of EIA to detect *C. trachomatis* in cervical samples showed that EIA identified only 16% of specimens that contained <10 EBs by DFA staining (15). MOMP PCR showed high sensitivities in different studies, ranged from 86-98% (13, 14).

In this study all 37 positive specimens in EIA/MOMP PCR were verified by using nested-PCR and these samples were regarded as true positive, thus the specificity of the EIA and MOMP PCR was 100%. There are some studies that reported false positive results and less specificity for antigen-EIA, indicating the need for verification of positive results by other methods such as DNA amplification (16, 17). The variable performance of EIA for detection of *C. trachomatis* might be due to patient characteristics such as gender and specimen type (17, 18). One study reported the sensitivity of EIA was 73% in endocervical

swabs from women and 60% in endourethral swabs from men (19).

A systematic review of 30 studies from 1990 onward showed that pooled sensitivities for EIA was higher on endocervical swab (65%) than urine (38%) specimens (20). Study on specimens from female commercial sex workers showed that EIA sensitivity was 68.6% in vaginal swab while in endocervical swab specimens it was increased to 77.1% (21). However, some studies showed that urine is superior to other specimens for screening of *C.trachomatis* by using nucleic acid amplification tests (20, 22-24). In the current study, the overall prevalence of *Chlamydia* infection in endocervical swab samples was 7.14%.

Several studies in other parts of Iran reported a range of 6-17% for *Chlamydia* prevalence, while other techniques and/or specimens were used (25). In a study on endocervical secretions of 123 married women with cervicitis the overall frequency of *Chlamydia* infection was 17% (21/123) (26). There are studies which investigated *C. trachomatis* infection on urine samples by PCR, one study showed 12.4% of the infertile (n=234) and 8.5% of the fertile (n=223) women were positive for *C. trachomatis* infection (8). In another study, 15% (39/130) of women were infected, while 27/130 (20.76%) were symptomatic and 12/130 (9.23%) were asymptomatic (27). Also, in report from Tehran, 12.6% of 1052 women and in a report from Sabzevar, north-east Iran, 13.77% of 196 pregnant women tested positive by PCR (28, 29). The prevalence of *Chlamydia* infection in Iranian male urine specimens was also studied that showed the rate of 10-20% in symptomatic patients when urine examined by PCR and 9.3% when cell culture was used (30-32).

Genital *Chlamydia* infection was reported from countries neighboring Iran, which showed different prevalence rates; several of them are higher. The wide variation of *Chlamydia* prevalence rates in these studies might be due to factors, such as different population studied, socioeconomic status, and

different techniques employed. In Turkey, the rates of *Chlamydia* positivity in women were ranged from less than 5.0% to more than 25% in symptomatic cases (33, 34). In Saudi Arabia, using ELISA method on endocervical/vaginal swabs, *C.trachomatis* antigen was detected in 10.5% (10/95) of pregnant women and 34.4% (35/102) of women with genital tract infection (35). In Pakistan, a national study conducted in 2004 among 730 women selling sex revealed high prevalence of STIs including 7.7% *C.trachomatis* (36). In a study in Baghdad, Iraq, *C.trachomatis* antibodies were found in 13.6% of mothers with full-term deliveries (n=198) and 6.4% of women with abortion (n=79) (37).

Similar to findings on other populations current data shows cervicitis is the most important risk factor associated with chlamydial infection of genital tracts. As shown in studies from Tehran and Lublin, Poland, women with cervicitis are more likely to have been previously infected with *Chlamydia* (14, 17, 26). Urethritis and cervicitis may lead to complications including PID, ectopic pregnancy, tubal factor infertility and reactive arthritis (38). Based on the available evidence, approximately 20% of women with chlamydial lower genital tract infection will develop PID, and less proportion will develop other adverse pregnancy outcomes (39). Given that the majority of the women population in this study was in reproductive ages, genital infections acquired during pregnancy should more adversely affect maternal/neonatal morbidity. Current data showed that most of the positive cases were more than 20 years old with approximately 90% of the total chlamydiosis cases, and the majority assigned to 30-39 years age group. Similar findings were reported by other studies in married women and symptomatic/asymptomatic men from Iran (26, 30).

Chlamydiosis should be regarded in women of reproductive ages with no genital symptoms or with symptoms such as: malodorous discharges, itching and cervicitis.

Conclusion

This study emphasizes the need for implementation of a routine *C. trachomatis* screening in public health programs for women particularly those with cervicitis. Since long term *C. trachomatis* infection may result in reproductive complications, early diagnosis and treatment of patients can effectively prevent adverse outcomes. The development of highly sensitive and specific nucleic acid amplification tests has improved effective diagnosis of chlamydial infections. However, molecular diagnostics need expertise and infrastructure beyond the capacities of many laboratories, hence not widely available everywhere in Iran. Primary screening of women by using a low-cost antigen based EIA is recommended, though due to the low sensitivity of EIA, verification of the negative results by a DNA amplification method is required.

Acknowledgment

This work was received funding from Cellular and Molecular Research Center, Qom University of Medical Sciences, Qom, and Vali-Asr Reproductive Health Research Center, Tehran University of Medical Sciences, Tehran, Iran.

Conflict of interest

Authors declare they have no conflict of interests.

References

- Sexually transmitted infections (STIs) [database on the Internet]. World Health Organization. Available at: <http://www.who.int/mediacentre/factsheets/fs110/en/>
- Da Ros CT, Schmitt Cda S. Global epidemiology of sexually transmitted diseases. *Asian J Androl* 2008; 10: 110-114.
- Kassaian N, Ataei B, Yaran M, Babak A, Shoaei P, Ataie M. HIV and other sexually transmitted infections in women with illegal social behavior in Isfahan, Iran. *Adv Biomed Res* 2012; 1: 5.
- Salerno J, Darling-Fisher C, Hawkins NM, Fraker E. Identifying relationships between high-risk sexual behaviors and screening positive for chlamydia and gonorrhea in school-wide screening events. *J Sch Health* 2013; 83: 99-104.
- Voisin DR, Salazar LF, Crosby R, Diclemente RJ. The relationship between ethnic identity and Chlamydia and Gonorrhea infections among low-income detained African American adolescent females. *Psychol Health Med* 2013; 18: 355-362.
- Masese L, Baeten JM, Richardson BA, Deya R, Kabare E, Bukusi E, et al. Incidence and correlates of *Chlamydia trachomatis* infection in a high-risk cohort of Kenyan women. *Sex Transm Dis* 2013; 40: 221-225.
- Al-Thani A, Abdul-Rahim H, Alabsi E, Bsaisu HN, Haddad P, Mumtaz GR, et al. Prevalence of *Chlamydia trachomatis* infection in the general population of women in Qatar. *Sex Transm Infect* 2013; 89 (Suppl.): 57-60.
- Rashidi BH, Chamani-Tabriz L, Haghollahi F, Jeddi-Tehrani M, Naghizadeh MM, Shariat M, et al. Effects of *Chlamydia trachomatis* Infection on Fertility; A Case-Control Study. *J Reprod Infertil* 2013; 14: 67-72.
- Price MJ, Ades AE, De Angelis D, Welton NJ, Macleod J, Soldan K, et al. Risk of pelvic inflammatory disease following *Chlamydia trachomatis* infection: analysis of prospective studies with a multistate model. *Am J Epidemiol.* 2013; 178: 484-492.
- Land JA, Gijsen AP, Kessels AG, Slobbe ME, Bruggeman CA. Performance of five serological chlamydia antibody tests in subfertile women. *Hum Reprod* 2003; 18: 2621-2627.
- Baud D, Regan L, Greub G. Comparison of five commercial serological tests for the detection of anti-*Chlamydia trachomatis* antibodies. *Eur J Clin Microbiol Infect Dis* 2010; 29: 669-675.
- Palayekar VV, Joshi JV, Hazari KT, Shah RS, Chitlange SM. Comparison of four nonculture diagnostic tests for *Chlamydia trachomatis* infection. *J Assoc Physicians India* 2000; 48: 481-483.
- Van Dyck E, Ieven M, Pattyn S, Van Damme L, Laga M. Detection of *Chlamydia trachomatis* and *Neisseria gonorrhoeae* by enzyme immunoassay, culture, and three nucleic acid amplification tests. *J Clin Microbiol* 2001; 39: 1751-1756.
- El Qouqa IA, Shubair ME, Al Jarousha AM, Sharif FA. Prevalence of *Chlamydia trachomatis* among women attending gynecology and infertility clinics in Gaza, Palestine. *Int J Infect Dis* 2009; 13: 334-341.
- Thomas BJ, Pierpoint T, Taylor-Robinson D, Renton AM. Quantification of *Chlamydia trachomatis* in cervical and urine specimens from women attending a genitourinary medicine clinic: implications for

- screening strategies. *Int J STD AIDS* 1998; 9: 448-451.
16. Malenie R, Joshi PJ, Mathur MD. *Chlamydia trachomatis* antigen detection in pregnancy and its verification by antibody blocking assay. *Indian J Med Microbiol* 2006; 24: 97-100.
 17. Leszczynska-Gorzela B, Darmochwal-Kolarz D, Borowiec-Blinowska A, Oleszczuk J. The prevalence of *Chlamydia trachomatis* infection in pregnant women. *Med Wieku Rozwoj* 2005; 9: 27-35.
 18. Kuipers JG, Scharmann K, Wollenhaupt J, Nettelbreker E, Hopf S, Zeidler H. Sensitivities of PCR, MicroTrak, ChlamydiaEIA, IDEIA, and PACE 2 for purified *Chlamydia trachomatis* elementary bodies in urine, peripheral blood, peripheral blood leukocytes, and synovial fluid. *J Clin Microbiol*. 1995; 33: 3186-3190.
 19. Harindra V, Underhill G, Tobin JM. Screening for genital chlamydia infection: DNA amplification techniques should be the test of choice. *Int J STD AIDS* 2003; 14: 723-726.
 20. Watson EJ, Templeton A, Russell I, Paavonen J, Mardh PA, Sary A, et al. The accuracy and efficacy of screening tests for *Chlamydia trachomatis*: a systematic review. *J Med Microbiol* 2002; 51: 1021-1031.
 21. Tanaka M, Nakayama H, Yoshida H, Takahashi K, Nagafuji T, Hagiwara T, et al. Detection of *Chlamydia trachomatis* in vaginal specimens from female commercial sex workers using a new improved enzyme immunoassay. *Sex Transm Infect* 1998; 74: 435-438.
 22. Macmillan S, McKenzie H, Templeton A. Parallel observation of four methods for screening women under 25 years of age for genital infection with *Chlamydia trachomatis*. *Eur J Obstet Gynecol Reprod Biol* 2003; 107: 68-73.
 23. Ngeow YF, Hema V, Zakaria M, Lee CH, Ramachandran S. Detection of *Chlamydia trachomatis* in urine samples by polymerase chain reaction and enzyme immunoassay. *Malays J Pathol* 1997; 19: 127-132.
 24. Chan EL, Brandt K, Stoneham H, Antonishyn N, Horsman GB. Comparison of the effectiveness of polymerase chain reaction and enzyme immunoassay in detecting *Chlamydia trachomatis* in different female genitourinary specimens. *Arch Pathol Lab Med* 2000; 124: 840-843.
 25. Hajikhani B, Motallebi T, Norouzi J, Bahador A, Bagheri R, Asgari S, et al. Classical and molecular methods for evaluation of *Chlamydia trachomatis* infection in women with tubal factor infertility. *J Reprod Infertil* 2013; 14: 29-33.
 26. Hashemi FB, Pourakbari B, Yazdi JZ. Frequency of *Chlamydia trachomatis* in women with cervicitis in Tehran, Iran. *Infect Dis Obstet Gynecol* 2009; 2009: 67014.
 27. Fatholahzadeh B, Bahador A, Haghghi Hasanabad M, Bazarjani F, Haghghi F. Comparative screening of *Chlamydia trachomatis* infection in women population in Tehran, Iran. *Iran Red Crescent Med J* 2012; 14: 289-293.
 28. Chamani-Tabriz L, Tehrani MJ, Akhondi MM, Mosavi-Jarrahi A, Zeraati H, Ghasemi J, et al. *Chlamydia trachomatis* prevalence in Iranian women attending obstetrics and gynaecology clinics. *Pak J Biol Sci* 2007; 10: 4490-4494.
 29. Haghghi Hasanabad M, Mohammadzadeh M, Bahador A, Fazel N, Rakhshani H, Majnooni A. Prevalence of *Chlamydia trachomatis* and *Mycoplasma genitalium* in pregnant women of Sabzevar-Iran. *Iran J Microbiol* 2011; 3: 123-128.
 30. Yeganeh O, Jeddi-Tehrani M, Yaghmaie F, Kamali K, Heidari-Vala H, Zeraati H, et al. A survey on the prevalence of *Chlamydia trachomatis* and *Mycoplasma genitalium* infections in symptomatic and asymptomatic men referring to urology clinic of Labbafinejad hospital, Tehran, Iran. *Iran Red Crescent Med J* 2013; 15: 340-344.
 31. Ghazvini K, Ahmadnia H, Ghanaat J. Frequency of *Chlamydia trachomatis* among male patients with urethritis in northeast of Iran detected by polymerase chain reaction. *Saudi J Kidney Dis Transpl* 2012; 23: 316-320.
 32. Ghanaat J, Afshari JT, Ghazvini K, Malvandi M. Prevalence of genital *Chlamydia* in Iranian males with urethritis attending clinics in Mashhad. *East Mediterr Health J* 2008; 14: 1333-1337.
 33. Kose S, Ersan G, Serin Sender S, Devrim I, Inal MM. A prevalence study of *Chlamydia infections* in Turkish population. *Braz J Infect Dis* 2013; 17: 114-115.
 34. Eksi F, Dikensoy E, Gayyurhan ED, Balci I, Balat O, Karsligil T, et al. The prevalence of *Chlamydia trachomatis* and *Neisseria gonorrhoeae* in the endocervical swab specimens of symptomatic, asymptomatic and infertile women in Turkey. *Arch Gynecol Obstet* 2011; 283: 1349-1355.
 35. Alzahrani AJ, Obeid OE, Hassan MI, Almulhim AA. Screening of pregnant women attending the antenatal care clinic of a tertiary hospital in eastern Saudi Arabia for *Chlamydia trachomatis* and *Neisseria gonorrhoeae* infections. *Indian J Sex Trans Dis* 2010; 31: 81-86.
 36. Khan MS, Unemo M, Zaman S, Lundborg CS. Health-seeking behaviour of women selling sex in Lahore, Pakistan. *Int J STD AIDS* 2011; 22: 376-380.
 37. Abdul-Karim ET, Abdul-Muhyemen N, Al-Saadie M. *Chlamydia trachomatis* and rubella antibodies in women with full-term deliveries and women with abortion in Baghdad. *East Mediterr Health J* 2009; 15: 1407-1411.
 38. Berntsson M, Tunback P. Clinical and microscopic

signs of cervicitis and urethritis: correlation with *Chlamydia trachomatis* infection in female STI patients. *Acta Derm Venereol* 2013; 93: 230-233.

39. Menon S, Timms P, Allan JA, Alexander K,

Rombauts L, Horner P, et al. Human and pathogen factors associated with *Chlamydia trachomatis*-related infertility in women. *Clin Microbiol Rev* 2015; 28: 969-985.