

Prevalence and clinical significance of antinuclear antibodies in Iranian women with unexplained recurrent miscarriage

Morteza Molazadeh¹ M.Sc., Hadi Karimzadeh² M.D., Mohammad R Azizi³ M.D.

1. Department of Immunodiagnosis, Erythron Clinical Lab, Isfahan, Iran.
2. Department of Rheumatology, Al-Zahra Hospital, Isfahan, Iran.
3. Department of Immunology, Fertility and Infertility Center, Isfahan, Iran.

Corresponding Author:

Morteza Molazadeh, No 232, Parnian Building, Taavaon 2, Ghadir Blvd., Sepahanshahr, Isfahan, Iran.
Email: Morteza_Molazadeh@yahoo.com
Tel: (+98) 3117922491

Received: 16 September 2013
Accepted: 15 December 2013

Abstract

Background: Antinuclear antibodies (ANAs) in women with recurrent miscarriage have been reported. The presence of moderate to high titers of these antibodies represents an autoimmune condition that can endanger the health of the fetus in pregnant women.

Objective: In this study, we evaluated the prevalence of ANAs in Iranian women with a history of two or more unexplained abortion.

Materials and Methods: 560 women with unexplained recurrent miscarriage and 560 healthy controls accounted for this study over a period of 13 months. ANAs were detected by indirect immunofluorescence technique.

Results: ANAs were detected in 74 of 560 (13.21%) patient with recurrent miscarriage, and in only 5 of 560 (0.9%) controls ($p < 0.001$). ANA positivity was generally found with low-positive results (1.40-1.80) in about 38% of positive cases, whereas moderate titers (1.160-1.320) and high titers (> 1.640) were seen in about 46% and 16% of cases respectively. Finally evaluating of microscopic ANA patterns revealed that about half of positive cases had antibodies against DNA- histone complex, associated with systemic lupus erythematosus disease.

Conclusion: Antinuclear antibodies are not uncommon in women with unexplained recurrent miscarriage, suggesting the possible role of an autoimmune disorder on abortion, at least in a subgroup of patients.

Key words: Recurrent miscarriage, Antinuclear antibodies, Indirect immunofluorescence.

Introduction

Recurrent Miscarriage (RM), defined as two or more abortion before 20 weeks pregnancy, affects 3% of all couples (1). Current diagnostic procedures identify etiological factors, such as translocations, immunologic factors, endocrine disorders and uterine abnormalities in 50% of these couples. The other 50% are diagnosed as couples with unexplained RM (2).

Many researchers have been conducted to identify the underlying mechanisms of RM, and accumulating evidence reveals that an immunologic mechanism is involved in some miscarriage. However, several studies of the immune interactions at the fetomaternal interface and genetic-epidemiologic studies document an immunological background for

many RM cases (3). Several autoantibodies, manufactured by the immune system directed against one or more of the individual's own proteins have been investigated as possible influences on reproductive success and failure. Autoantibodies may persist for many years in the circulation as a marker of a prior autoimmune attack, but their presence does not necessarily indicate a current disease process. The anti-phospholipid antibodies such as lupus anticoagulant, anti-cardiolipin and anti- β_2 glycoprotein are associated with RM or as possible factors involved in infertility (4).

Antibodies to thyroid antigens, such as anti-thyroglobulin and anti-thyroid peroxidase, antibodies to nuclear antigens, anti-laminin, anti-prothrombin antibodies and anti-saccharomyces cerevisiae antibodies, have

also been implicated in pregnancy complications (5-7). Antinuclear antibodies (ANAs) are as specific class of autoantibodies that have the capability of binding and destroying certain structures within the nucleus of the cells (8). Presently the ANAs have been categorized in two main groups; the first includes autoantibodies to DNA and histones and the second one consists autoantibodies to extractable nuclear antigens that are including autoantibodies to Smith antigen, ribonucleoproteins, SSA/Ro, SSB/La, Scl-70, Jo-1 (9).

Indirect immunofluorescence technique using Hep-2 substrate has been the standard method for detecting these autoantibodies where can be present in a number of immunologic diseases, including systemic lupus erythematosus (SLE), progressive systemic sclerosis, Sjogren's syndrome, scleroderma polymyositis, dermatomyositis and in persons taking hydralazine and procainamide or isoniazid. In addition, ANAs are present in some normal individuals or those who have collagen vascular diseases (10).

In pregnant women the presence of ANAs indicates there may be an underlying autoimmune process that affects the development of the placenta and can lead to early pregnancy loss. Patients with unexplained recurrent abortion often have autoantibodies in blood as antiphospholipid antibodies and antinuclear antibodies (11). In the present study, we evaluated the incidence and importance of antinuclear antibodies in women with unexplained recurrent miscarriage.

Materials and methods

Study population

This is a prospective observational study where all consecutive cases of unexplained RM were included between February 2012 and March 2013. 560 women with history of

two or more consecutive unexplained RM in the first trimester were followed up sequentially in Isfahan Infertility Center (Isfahan, Iran), accounted for this study over a period of 13 months. The selected patients belonged to the age group of 22-35 and they were thoroughly investigated for all baseline blood parameters, and other infectious diseases including metabolic diseases.

All other pathologic factors were ruled out except ANAs. Those patients, who showed negative for the above tests, were selected for the next step of ANAs screening test. An additional group including 560 healthy, age- and sex-matched controls was assessed in order to compare the frequency of ANA positivity in patients with unexplained RM vs. a sample of normal subjects. These controls had no evidence of inflammatory conditions.

Indirect immunofluorescence

For this purpose blood samples were collected from the patients then allowed to clot. After 30 min clotted samples were centrifuged at 4000 rpm for 10 min and purified serum was collected from the samples and kept in -20°C until future evaluation. ANAs were detected by indirect immunofluorescence technique on HEp-2 cells ANA kit (Euroimmune AG Company, Germany). ANA positivity was defined as a titre ≥ 1.40 . A low positive test was defined as titres of 1.40-1.80, a moderate positive test was considered with ANA titres of 1.160-1.320, and a high positive test was considered with a titre of ANA ≥ 1.640 . In addition to, ANA microscopic patterns were investigated for determination of type of anti-nuclear antibodies (anti-DNA, anti-histone and extractable nuclear antigens).

Statistical analysis

Data were expressed as mean \pm SD. Comparison between patient and control groups was performed using unpaired t-test

for continuous variables and a chi-square analysis for categorical variables. Statistical analysis was performed using SPSS 13.0 software. Odd ratios were given with 95% confidence intervals (CI). $P < 0.05$ was considered to show statistical significance.

Results

ANA titre

ANAs were detected in 74 of 560 (13.2%) unexplained RM. A positive ANA titre was recorded in only 5 of 560 (0.9%) healthy controls ($p < 0.001$ vs. patients with unexplained RM, see Figure 1). In all cases normal subjects had a low titre (1.40-1.80). Among patients with unexplained RM, a low-

positive titre of ANA (1.40-1.80) was recorded in 28 patients (5.2%), while a moderate-positive titre (1.160-1.320) was observed in 7 patients (6.3%). In 12 patients (2.2%) High-positive titres ($\geq 1/640$) were recorded (Figure 1).

Microscopic patterns

Evaluating of ANA patterns by fluorescent microscopy revealed that 35 of 74 positive patients in unexplained RM group had homogenous pattern (47.3%), while 4 patients had peripheral/rim pattern (5.4%), 24 patients had speckled pattern (32.4%), 8 patients had nucleolar pattern (10.8%) and 3 patients (4%) had centromeric pattern (see Figure 2). These patterns are illustrated in Figure 3.

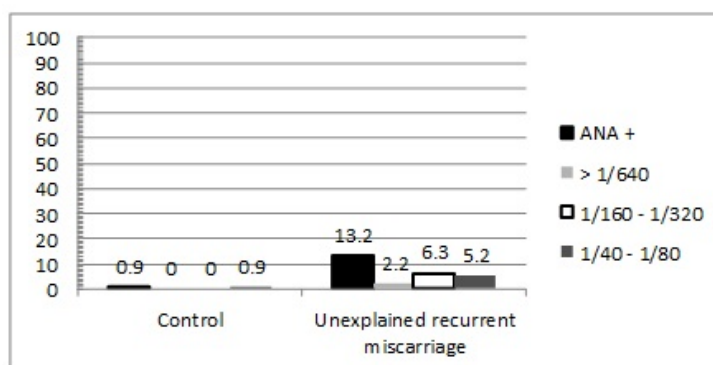


Figure 1. Relative frequencies of ANA positivity in patients with unexplained recurrent miscarriage and health age- and sex-matched controls (control vs. patients, respectively).

Dark gray bars: ANA 1.40-1.80, $p < 0.001$;
 Grey bars: ANA ≥ 1.640 , $p < 0.001$;

White bars: ANA 1.60-1.320, $p < 0.001$
 Back bars: overall ANA positivity, $p < 0.001$

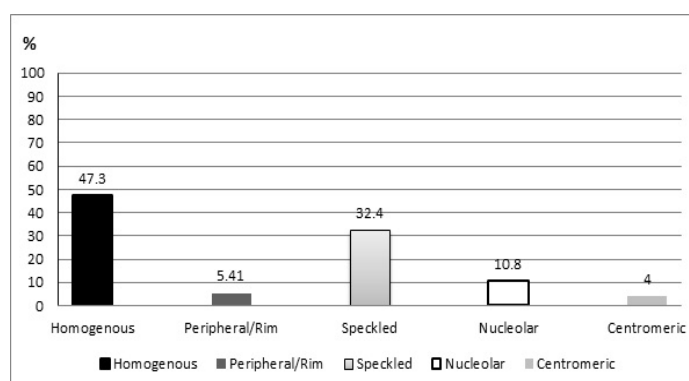


Figure 2. Relative frequencies of ANA patterns in patients with unexplained recurrent miscarriage.

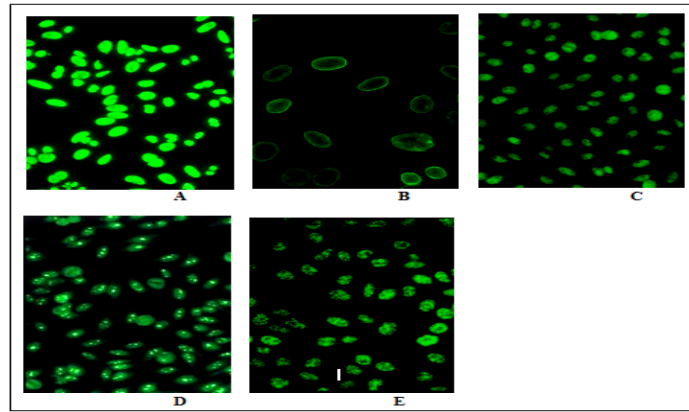


Figure 3. ANA patterns in patients with unexplained recurrent miscarriage by immunofluorescence microscopy. A: Homogenous B: Peripheral/rim C: Speckled D: Nuclear E: Centromeric

Discussion

Immunological responses could be the cause in many cases of infertility and miscarriage. Some immunological reasons that contribute to infertility are reproductive autoimmune failure syndrome, the presence of anti-phospholipid antibodies, and antinuclear antibodies (12). The mechanism by which ANAs cause pregnancy loss is not known well but based on a hypothesis antinuclear antibodies cause an inflammation in the uterus that does not allow it to be a suitable host for implantation of the embryo. Natural killer cells misinterpret the fetal cells as cancer cells and attack them (13). An individual that presents with reproductive autoimmune failure syndrome has unexplained infertility, endometriosis, and repetitive miscarriages due to elevated levels of antinuclear antibodies circulating (14).

Cubillos *et al* found that the incidence of ANAs was 31.8% in patients with a history of miscarriages (110 patients), but only 5.7% in 35 healthy patients with proven fertility and no history of pregnancy loss or autoimmune disease (15). Mavragani and *et al* shown that In women with autoimmune disorders, a history of recurrent pregnancy loss is independently associated with reactivity against antinuclear antibodies and also with the presence of antithyroglobulin antibodies (16).

In several studies, a high prevalence of low-titre ANA has been reported in the sera of patients with both explained and unexplained pregnancy losses. However, the significance of these findings is still unclear. Shoenfeld and coworkers were found antinuclear antibodies with a higher prevalence in patients with autoimmune disease. However, they were not found to occur with a higher prevalence in patients with infertility or recurrent pregnancy loss (17). ANA titres are important in the interpretation of the test but fluctuations in their titres have little clinical relevance in autoimmune disease. In one study of 125 cases with a positive ANA but no other evidence of connective tissue disease, titres greater than 1.40 were seen in 32%, greater than 1.80 were seen in 13%, and greater than 1.320 were only seen in 3% of patients (18). While the presence of high titres of antibodies (≥ 1.640) should arouse suspicion of an autoimmune disorder, low titres of antibody (≤ 1.80) with no signs or symptoms of disease are generally a non-specific finding, more common in women and elderly, as well as in patients with organ-specific autoimmune diseases (19).

This study confirms that ANA positivity is not uncommon in women with unexplained RM, suggesting the possible role of an autoimmune disorder on abortion, at least in a subgroup of patients. Our results showed that ANA positivity was generally found with a

moderate-positive result (1.160-1.320) in about 46% of positive cases, whereas low titres (1.40-1.80) and high titres were seen in about 38% and 16% of cases respectively. Moderate and higher titres probably are associated with known autoimmune disorders. In the other hand diagnosis of type of autoimmune disorders is feasible by using interpretation of microscopic ANA patterns.

Correlation of these patterns and autoimmune disease was mentioned in table I. This study showed that in unexplained recurrent pregnancy loss, the most common antinuclear autoantibodies were anti-dsDNA/anti-histones antibodies (homogenous pattern) associated with SLE, a systemic and multisymptomatic disease, and that should be considered in these patients based on our study.

Table I. Antinuclear antibodies patterns and associated disease

ANA pattern	Associated antigen	Associated disease
Homogenous	DNA histone complex (ribonucleoprotein, nucleosome)	SLE, drug-induced lupus, other diseases
Peripheral/rim	DNA, nuclear envelope antigens	SLE, autoimmune hepatitis
Speckled	Smith, RNP, SS-A, SS-B, Scl-70, centromere, RNA polymerase II and III	SLE, MCTD, Sjögren syndrome, PSS, Other disease
Nucleolar	Nucleolar RNA, RNA polymerase I	Diffuse systemic sclerosis, hepatocellular carcinoma
Centromeric	Centromer	CREST syndrom

RNP: ribonucleoproteins, SLE: systemic lupus erythematosus, MCTD: mixed connective tissue disease, PSS: primary systemic sclerosis,

Acknowledgments

We would like to thank Dr. Mehdi Ahmadi, Dr. Asadollah Kalantari and Erythron Clinical Lab and Isfahan Fertility & Infertility Center for financial support.

Conflict of interest

There is no conflict of interest in this study.

References

1. Regan L, Rai R. Epidemiology and the medical causes of miscarriage. *Baillieres Best Pract Res Clin Obstet Gynaecol* 2000; 14: 839-854.
2. Rai R, Regan L. Recurrent miscarriage. *Lancet* 2006; 368: 601-611.
3. Takeshita T. Diagnosis and treatment of recurrent miscarriage associated with immunologic disorders: Is paternal lymphocyte immunization a relic of the past? *J Nippon Med Sch* 2004; 71: 308-313.
4. Li Q, Li H, Tian X. [The study of autoantibodies in women with habitual abortion of unknown etiology]. *Zhonghua Fu Chan Ke Za Zhi* 1998; 33: 13-16. (In Chinese)
5. Bustos D, Moret A, Tambutti M, Gogorza S, Testa R, Ascione A, et al. Autoantibodies in Argentina women with recurrent pregnancy loss. *Am J Reprod Immunol* 2006; 55: 201-207.
6. Inagaki J, Kondo A, Lopez LR, Shoenfeld Y, Matsuura E. Pathogenic role of anti-laminin-1 autoantibodies. *Ann N Y Acad Sci* 2005; 1051: 174-184.
7. Shoenfeld Y, Carp HJ, Molina V, Blank M, Cervera R, Balasch J, et al. Autoantibodies and prediction of reproductive failure. *Am J Reprod Immunol* 2006; 56: 337-344.
8. Sulcebe G, Morcka K. Diagnostic and prognostic significance of different antinuclear antibodies. *Clin Exp Rheumatol* 1992; 10: 255-261.
9. Kavanaugh A, Tomar R, Reveille J, Solomon DH, Homburger HA. Guidelines for Clinical Use of the Antinuclear Antibody Test and Tests for Specific Autoantibodies to Nuclear Antigens. *Arch Pathol Lab Med* 2000; 124: 71-81.
10. Mariz HA, Sato EI, Barbosa SH, Rodrigues SH, Dellavance A, Andrade LE. Pattern on the antinuclear antibody-Hep-2 test is a critical parameter for discriminating 119 antinuclear antibody positive healthy individuals and patients with autoimmune rheumatic 120 diseases. *Arthritis Rheum* 2011; 63: 191-200.
11. Malinowski A, Szpakowski M, Wilczyński J, Oszukowski P, Puchała B, Włodarczyk B. Antinuclear antibodies in women with recurrent pregnancy wastage and their prognostic value for immunotherapy. *Zentrabl Gynakol* 1994; 116: 631-635.
12. Gleicher N. Autoantibodies in infertility: Current opinion. *Hum Reprod Update* 1998; 4: 169-176.
13. Walia GK, Mukhopadhyay R, Saraswathy KN, Puri M, Chahal SMS. Immuno-Molecular Etiology of Recurrent Pregnancy Loss and the Anthropological Perspective. *Int J Hum Genet* 2008; 8: 227-235.
14. Kutteh WH, Odom LN. Evaluating recurrent pregnancy loss: The role of autoimmune screening. *SRM J* 2012; 10: 5-11.
15. Cubillos J, Lucena A, Lucena C, Mendoza JC, Ruiz H, Arango A, et al. Incidence of autoantibodies in the

- infertile population. *Early Pregnancy* 1997; 3: 119-124.
16. Shoenfeld Y, Carp HJ, Molina V, Blank M, Cervera R, Balasch J, et al. Autoantibodies and prediction of reproductive failure. *Am J Reprod Immunol* 2006; 56: 337-344.
 17. Tan EM, Feltkamp TE, Smolen JS, Butcher B, Dawkins R, Fritzler MJ, et al. Range of antinuclear antibodies in "healthy" individuals. *Arthritis Rheum* 1997; 40: 1601-1611.
 18. Slater CA, Davis RB, Shmerling RH. Antinuclear antibody testing: a study of clinical utility. *Arch Intern Med* 1996; 156: 1421-1425.