

The effect of mouse embryonic fibroblast in direct differentiation of mouse embryonic stem cells

Mahmoud Hashemi-Tabar, Ph.D., Fatemeh Javadnia, Ph.D., Mahmoud Orazizadeh, Ph.D., Ghasem Sakei, Ph.D., Maryam Baazm, M.Sc.

Department of Anatomy, School of Medicine, Jondishapour University of Medical Sciences, Ahwaz, Iran.

Received: 14 May 2006; accepted: 22 September 2006

Abstract

Background: Since embryonic stem (ES) cells have the dual ability to proliferate indefinitely and differentiate into multiple tissue types, ES cells could potentially provide an unlimited cell supply for human transplantation.

Objective: In order to study the differentiation of mouse embryonic stem (mES) cells, they were cultured in suspension by using ES media without Leukemia Inhibitory Factor (LIF) to induce spontaneous differentiation. Cellular morphology of differentiated derivatives was then evaluated.

Materials and Methods: Undifferentiated mES from our laboratory were cultured in three different settings by using ES media containing 0.1% / 1mM trypsin/EDTA and removing LIF; in the absence of murine embryonic fibroblast (MEF) feeder cells (group 1), in the presence of MEF feeder cells with a density of 0.5×10^5 cells/ml (group 2), and 0.5×10^6 cells/ml (group 3). Five days after the initiation of cell culture, and inducing mES cells to form embryoid bodies (EBs), they were removed from dish by centrifugation, and then they were cultured on collagen coated dishes for 20 days. The dishes were fixed and stained by Wright-Gimsa method at the end of the study period.

Results: In group 1, mES cells showed spontaneous differentiation to all derivatives of three germ cells, including: epithelia like, fibroblast like and neuron-like cells. In group 2, almost all ES cells were found to be differentiated into granular progenitor cells including hematopoietic cell lineages. In group 3, various morphologies including nerve cell lineages and fibroblast-like cells were detected.

Conclusion: Differentiation of mES cells can be a dose response process, depending on the factors that may be released from MEF feeder layer to ES media in a coculture system. Our results indicated that in the presence of low numbers of MEF cells, mES cells can spontaneously differentiate into hematopoietic cell lineages.

Key Words: *Embryonic stem cells, Embryoid bodies, Mouse embryonic fibroblast, Coculture, Differentiation*

Introduction

Embryonic stem (ES) cells are pluripotent cells derived from the inner cell mass of blastocyst-stage embryos that can replicate indefinitely in culture when maintained in an undifferentiated state by addition of

Correspondence Author:

Dr. Mahmoud Hashemi-Tabar, Department of Anatomy, School of Medicine, Jondishapour University of Medical Sciences, Ahwaz, Iran.

E-mail: Hashemi_tabar@Hotmail.com

maintained in an undifferentiated state by addition of leukemia inhibitory factor (LIF) to the culture medium (1,2). LIF implies suppression of differentiation and proliferation of ES cells through a cell surface complex composed of LIF receptor β (LIFR β) and gp 130. These receptors can activate a transcription factor STAT3. Removal of undifferentiated ES cells from their feeder layer containing LIF and culturing them in suspension state, leads to the formation of embryo-like aggregates, known as embryoid bodies (EBs), in a similar process of cavitations that occurs in blastocyst stage embryos (3). Available data

demonstrate that induction of ES cells into EBs and the cavitations of primitive endoderm in blastocyst are similar in signaling effects.

The primitive ectoderm (epiblast) forms three primary germ layers: ectoderm, mesoderm, and definitive endoderm. These germ layers interact to form all tissues and organs of the developing embryo (4). The visceral endoderm is known to be an important source of patterning and differentiation signals in vivo (5). In addition, the ES cells in a similar signaling can differentiate into specific cell lineages that can be mediated by action of matrix components and/or growth factors (6). Molecular signatures including ligand/receptor and secreted inhibitors of different signaling pathways as fibroblast growth factor (FGF) and TGF β /bone morphogenetic protein (BMP) pathways are necessary to improve conditions not only to prevent differentiation but also to induce differentiation of ES cells (7). This will be extremely difficult since different growth factors have unique effects on the growth of undifferentiated ES cells and their differentiation (8). For example, one of the most routinely used mitogenic and growth factors for propagation of undifferentiated ES cells is basic FGF (bFGF) which has two distinct roles. Besides its mitogenic function on proliferating ES cells, and inhibition of endodermal differentiation in early phases, it can direct ES cells into ectodermal and mesodermal derivatives during the late courses of differentiation. It can also act as a differentiation factor for immortalised hypothalamic neuron stem cells (9).

In vitro differentiation potential of mES cells and in particular, the use of human ES (hES) cells will facilitate studies on early human development and early embryogenesis events, which so far have been impossible (10). Their ability to spontaneously differentiate into a broad spectrum of derivatives of all three germ layers has also facilitated the examination of ES cells commitment to multiple cell lineages which will opens up a wide range of applications of ES cells technology, including preparation of an unlimited source of cells and tissues for transplantation therapy in various diseases and injuries (11, 12). However to date, the challenge remains to produce mature, functional and pure derivatives of ES cell that can be utilized for transplantation purposes.

In this study, by comparing the cell morphology in the presence and in the absence of MEF cells, we have evaluated the differentiation potential of ES cells and studied the probable effects of factors that may be released from MEF feeder cells into medium. We then followed the progress underlying the directed ES cells differentiation in two systems.

Materials and methods

ES cells culture

A previously established mouse ES cells in our laboratory was in 60 mm dishes containing inactivated MEF cells in 37°C, at 5% CO₂ in a humidified incubator. ES culture medium was composed of Dulbecco's Modified Egals medium with high glucose (DMEM; Sigma Aldrich) supplemented with 10% FBS (Uroclone), 1% nonessential amino acids (Sigma Aldrich), 2 mM L-Glutamin (Sigma Aldrich), 0.1 mM 2-mercaptoethanol (Sigma Aldrich), penicillin/streptomycin (100 U/ml and 100 μ g/ml respectively, Sigma Aldrich); and 10³ units/ml of LIF (Sigma Aldrich), which keeps ES cells in an undifferentiated state.

Passage of ES cells on collagen coated dishes

The undifferentiated ES cells was transferred to 24 well dishes (Cellstar) previously coated with 0.1% swine collagen type I (Sigma Aldrich) which had been treated with acetic acid 0.1% stock solution in 0.1 M, pH 7.2 PBS and cultured for one day in ES medium on the above condition to remove the MEF cells. Then the ES cells in each well were treated with mild 0.5% /0.5mM trypsin/EDTA (Sigma Aldrich) in PBS. The detached ES cells were diluted by ES medium without LIF in a density of 10³ /ml and divided to three groups for EBs formation. Briefly the content of each well was transferred into the 4 well plates as follows.

EBs formation in suspension and ES differentiation

To induce the ES spontaneous differentiation in 24 wells dishes, ES cells were grown in the ES medium which contained 0.1% / 1mM trypsin/EDTA (sigma Aldrich) 20% FBS but no LIF. The ES cells in above condition were cultured in three different settings for 5 days to induce EBs formation: 1/ in the absence of MEF cells (group 1), 2/ in the presence of MEF cells with a density of 0.5 \times 10⁵ cells/ml (group 2), and 3/ in the presence of MEF cells with a density of 0.5 \times 10⁶ cells/ml (group 3). After 5 days, the supernatant containing EBs was collected from each well and were transferred into a new centrifuge tube for a few minutes to sediment the EBs. Sedimented EBs from each well were then transferred to the collagen-coated 4-well dishes to attach to substrate and were cultured for 20 days. The medium was changed every 4-5 days. Spontaneously differentiation of ES cells was checked every day by an inverted microscope. In order to detect differentiating haematopoietic cells, ES cells and their derivatives were examined by morphology. They were also fixed (by acetic acid and metanol 1:3) and stained by Wright-Gimsa method.

Results

In a standard ES cell culture system, there may be numerous different cytokines and growth factors which can be released from MEF feeder layer. In this study, the possible effect of MEF cells on ES cell differentiation was investigated. In general, the undifferentiated mES cells with distinct colony boundaries but with indistinguishable cell boundaries (fig 1-A) have a potential to differentiate into EBs if they are cultured in suspension state. During 5 days of suspension culture, mES cells loosely aggregate and begin to form a large fluid-filled cavity. Embryo-like EBs appeared in all of three studied groups (fig 1 B). Appropriate number of EBs from each group was plated on collagen-coated dishes and was checked every day for attachment to the substrate by an inverted microscope.

In group 1, various cellular structures displaying epithelial-like, fibroblast-like and nerve-like morphologies were seen in spontaneously differentiated EBs (fig 1 C, D). In group 2 in which mES cells were cultured with low density MEF cells, numerous population of cells containing azophilic, acidophilic and basophilic granules was observed (fig 1 E,F,G). In cells that contained acidophilic granules, nuclei were either intact or degenerated (fig 1 E, F). An heterogeneous population of cells including neuron-like cells with long projection-like extremities (fig 1H,I) and fibroblast-like (fig 1I) cells were observed in group 3, in which mES cells were co-cultured with high density MEF cells. Epithelial-like cells morphology was not observed in group 2 and group 3.

Discussion

Pluripotent ES cells are capable of differentiating into many cell types. The promising of using these cells for medical applications, including cellular transplantation, has attracted more attention in the field of ES cells isolation and differentiation (13). In 1985, the blood formation from mouse ES cells was reported *in vitro* (14), but achievement of stable blood engraftment in irradiated mice with ES-derived progenitor cells still remains a challenge. Limited success in hematopoietic engraft deserves more investigation in the field of transcription factors and other soluble molecules to delineate the underlying mechanisms (14). The main goal of this study was to examine the conditions which are required by mouse ES cells to produce a uniform population of precursor cells or fully differentiated cells *in vitro*. Previous

work with human ES cells showed that several types of cells can be enriched in culture either by the addition of growth factors or by introduction of transcription factors (15-17). Whereas conditions that direct differentiation of mouse ES cells into different phenotypes such as; neuronal, hematopoietic, and endocrine have been published (18). In this study, we have demonstrated that lack of MEF releasing factors promote spontaneous differentiation of ES cells derivatives of all three germinal layers including; epithelial like cells that arise from endoderm (i.e. hepatic cells and pancreatic cells derived from ES cells), fibroblast like cells derived from mesoderm (i.e. smooth and striated muscle cells haematopoietic lineages), and neuron-like progenitor cells. In the present of low density MEF cells, the ES cells directed to hematopoietic cells with different azo, acidic and basophilic granules based on the Romanowsky staining method. It is useful to use PCR and RT-PCR for detection of gene expression pattern such as GATA-1,2 and FOG-1 that is essential for hematopoietic differentiation and EBs differentiation to hematopoietic precursors (19). A possibility to identify growth factors is to analyse feeder-cell-conditioned medium. Lim and Bodnar (2002) identified 136 unique protein species such as IGF-binding protein 4, pigment epithelium-derived factor, SPARC (secreted protein, acidic and rich in cysteine), nidogen-2, galectin 1 and peroxiredoxins by analyses of conditioned medium from MEF cells, and the STO cell line (20). The growth factors based on their differentiation effects can be divided into three groups: The first group (TGF- β 1 and activin-A) appears to inhibit endodermal and ectodermal cells, but allow differentiation into mesodermal (muscle) cells. The second group includes factors that allow or induce differentiation into ectodermal as well as mesodermal cells (RA, bFGF, BMP-4, and EGF), whereas the third group (NGF and HGF) allows differentiation into all three embryonic lineages including endoderm (9). Differentiation of ES cells in a serum-free system demonstrates that BMP-4, but not several other related TGF β family members, induces hematopoietic cells from primitive mesoderm in EBs. BMP-4 induces ventral-type mesoderm formation, including blood cells, in *Xenopus* embryos (21). Therefore, our results demonstrated that differentiation of ES cells is a dose-response process, depending on factors that may be released into the ES cell medium. BMP-4 indeed is one of the most important factors which involve in haematopoietic differentiation from mesoderm. It is very likely that the concentration of BMP-4 that is required for ES cell differentiation into haematopoietic cells is optimal

in low density of MEF cells. It is unknown whether this factor acts on pre-hematopoietic mesoderm or on committed hematopoietic cells. Thus, ES cells in this experiment can be used to test candidate growth factors for initiation and support of embryonic hematopoiesis. EBs themselves also offer a potential source for new cytokines that stimulate primitive

and/or definitive hematopoiesis. Therefore in the presence of low density MEF cells, mES cells differentiate towards hematopoietic lineage and produce relatively large numbers of early embryonic hematopoietic precursor cells. These precursors can be isolated and manipulated for further studies in the field of embryonic blood cell development.

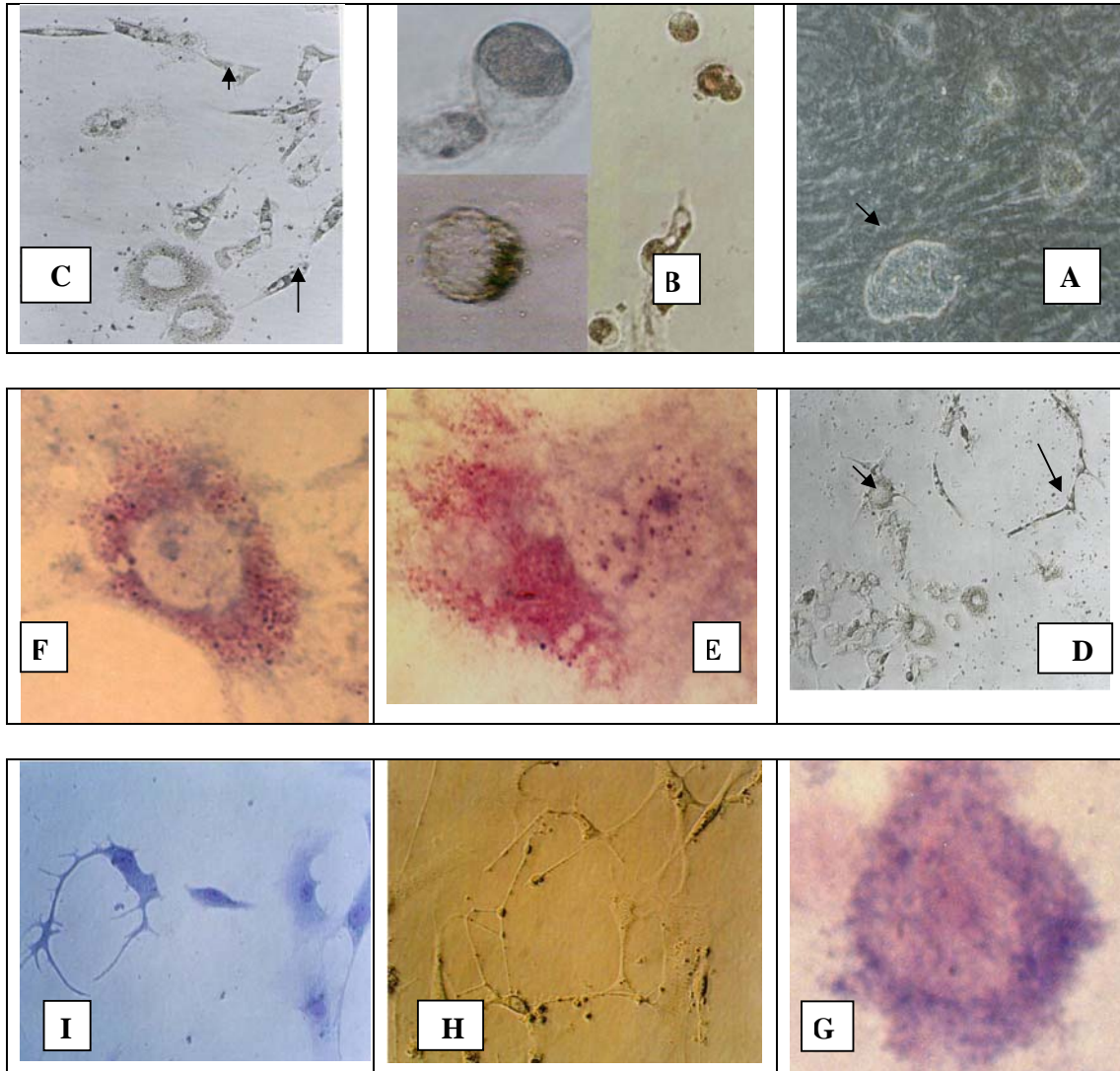


Figure 1. A) a colony of undifferentiated ES cells. B) Embryo like (embryoid bodies) with a large fluid-filled cavity (40× right B) and (200× left B). C) Fibroblast-like cells containing pigmented granules (long arrow) and non pigmented (short arrow) , D) epithelial-like cells probably endoderm-derived (short arrow) and neuron-like cell (long arrow) in spontaneously differentiated EBs which have been cultured in absence of fibroblast. E) Azophilic and acidophilic, F) acidophilic, G) basophilic granules that have been seen in co-culture with low density of fibroblasts (Right-Giemsa staining H, I). The cells having long projection are more likely to be neuron cells in co-culture with high density of fibroblasts.

Conclusion

Differentiation of mES cells into derivatives of three germ layers is a dose response process, depending on factors that are released from MEF feeder cells into ES media in a coculture system. Our experimental approach shows that the establishment of a system in which mES cells are induced to produce embryonic hematopoietic cell lineages for investigational purposes can be very valuable for further research on early hematopoiesis and the analysis of hematopoietic precursors. If both primitive and definitive hematopoiesis cells are aroused from one precursor cells in an EB, it could be very feasible to isolate and characterize this precursor from early EBs for future studies which investigate the mechanisms responsible for the derivation of haematopoietic precursor's cells.

References

1. Evans MJ, Kaufman MH. Establishment in culture of pluripotential cells from mouse embryos. *Nature* 1981; 292: 154–156.
2. Williams RL, Hilton DJ, Pease S, Willson TA, Stewart CL, Gearing DP, *et al.* Myeloid leukaemia inhibitory factor maintains the developmental potential of embryonic stem cells. *Nature* 1988; 336: 684–687
3. Itskovitz-Eldor J, Schuldiner M, Karsenti D, Eden A, Yanuka A, Amit M, *et al.* Differentiation of Human Embryonic Stem Cells into Embryoid Bodies Comprising the Three Embryonic Germ Layers. *Molecular Medicine* 2000; 6: 88–95.
4. Leahy A, Xiong JW, Kuhnert F, Stuhlmann H. Use of developmental marker genes to define temporal and spatial patterns of differentiation during embryoid body formation. *J Exp Zool* 1999; 284: 67–81.
5. Brook FA, Gardner RL. The origin and efficient derivation of embryonic stem cells in the mouse. *Proc Natl Acad Sci* 1997; 94: 5709-5712.
6. Rathjen J, Rathjen PD. Mouse ES cells: experimental exploitation of pluripotent differentiation potential. *Curr Opin Genet Dev* 2001; 11: 587-594.
7. Johansson BM, Wiles MV. Evidence for involvement of activin A and bone morphogenetic protein 4 in mammalian mesoderm and hematopoietic development. *Mol Cell Biol* 1995; 15: 141–151.
8. Sato N, Sanjuan IM, Heke M, Uchida M, Naef F, Brivanlou AH. Molecular signature of human embryonic stem cells and its comparison with the mouse. *Developmental Biology* 2003; 260: 404–413.
9. Schuldiner M, Anuka O, Itskovitz-Eldor J, Melton DA, Benvenisty N. Effects of eight growth factors on the differentiation of cells derived from human embryonic stem cells. *Proc Natl Acad Sci USA* 2000; 97: 11307–11312.
10. Odorico JS, Kaufman DS, Thomson JA. Multilineage differentiation from human embryonic stem cell lines. *Stem Cells* 2001; 19: 193–204.
11. Dinsmore J, Ratliff J, Deacon T, Pakzaban P, Jacoby D, Galpern W, *et al.* Embryonic stem cells differentiated *in vitro* as a novel source of cells for transplantation. *Cell Transplant* 1996; 5: 131–143.
12. Rathjen PD, Lake J, Whaatt LM, Bettess MD, Rathjen J. Properties and uses of embryonic stem cells: prospects for application to human biology and gene therapy. *Reprod Fertile Dev* 1998; 10: 31-47.
13. Doetschman TC, Elistter H, Katz M, Schmidt W, Kemler R. The *in vitro* development of blastocyst derived embryonic stem cell lines: formation of visceral yolk sac, blood islands and myocardium. *J Embryol Exp Morph* 1985; 87: 27-45.
14. Kyba M, Perlingeiro RC, Daley GQ. HoxB4 confers definitive lymphoid-myeloid engraftment potential on embryonic stem cell and yolk sac hematopoietic progenitors. *Cell* 2002; 109: 29–37.
15. Schuldiner M, Eiges R, Eden A, Yanuka O, Itskovitz-Eldor J, Goldstein RS, *et al.* Induced neuronal differentiation of human embryonic stem cells. *Brain Research* 2001; 913: 201–205.
16. Mummery C, Ward-van Oostwaard D, Doevendans P, Spijker R, van den Brink S, Hassink R, *et al.* Differentiation of human embryonic stem cells to cardiomyocytes: role of coculture with visceral endoderm-like cells. *Circulation* 2003; 107: 2733–2740.
17. Kaufman DS, Hanson ET, Lewis RL, Auerbach R, Thomson JA. Hematopoietic colony-forming cells derived from human embryonic stem cells. *PNAS* 2001; 98: 10716–10721.
18. Wobus AM., Boheler KR. Embryonic stem cells: prospects for developmental biology and cell therapy. *Physiol Rrv* 2005; 85: 635-678.
19. Tanaka M, Kitajima K, Kita K, Yoshikawa H, Nakano T. Differentiation status dependent function of FOG-1. *Genes to Cells* 2004; 9: 1213–1226.
20. Lim JW, Bodnar A. Proteome analysis of conditioned medium from mouse embryonic fibroblast feeder layers which support the growth of human embryonic stem cells. *Proteomics* 2002; 2: 1187–1203.
21. Valdimarsdottir G, Mummery C. Functions of the TGFβ superfamily in human embryonic stem cells. *APMIS* 2005; 113: 773-789.

