

Effect of granulocyte colony stimulating factor (G-CSF) on IVF outcomes in infertile women: An RCT

Maryam Eftekhar¹ M.D., Robabe Hosseinisadat^{1,2} M.D., Ramesh Baradaran¹ M.D., Elham Naghshineh³ M.D.

1. Research and Clinical Center for Infertility, Shahid Sadoughi University of Medical Sciences, Yazd, Iran.
2. Department of Obstetrics and Gynecology, School of Medicine, Kerman University of Medical Sciences, Kerman, Iran.
3. Department of Obstetrics and Gynecology, School of Medicine, Isfahan University of Medical Sciences, Isfahan, Iran.

Corresponding Author:

Robabe Hosseinisadat,
Department of Obstetrics and Gynecology, School of Medicine, Kerman University of Medical Sciences, Kerman, Iran. Postal Code: 76116914111
Email: robabehosseinisadat@yahoo.com
Tel: (+9834447874)

Received: 13 January 2016
Accepted: 29 February 2016
Updated: 30 January 2022

Abstract

Background: Despite major advances in assisted reproductive techniques, the implantation rates remain relatively low. Some studies have demonstrated that intrauterine infusion of granulocyte colony stimulating factor (G-CSF) improves implantation in infertile women.

Objective: To assess the G-CSF effects on IVF outcomes in women with normal endometrial thickness.

Materials and methods: In this randomized controlled clinical trial, 100 infertile women with normal endometrial thickness who were candidate for IVF were evaluated in two groups. Exclusion criteria were positive history of repeated implantation failure (RIF), endocrine disorders, severe endometriosis, congenital or acquired uterine anomaly and contraindication for G-CSF (renal disease, sickle cell disease, or malignancy). In G-CSF group (n=50), 300 µg trans cervical intrauterine of G-CSF was administered at the oocyte retrieval day. Controls (n=50) were treated with standard protocol. Chemical, clinical and ongoing pregnancy rates, implantation rate, and miscarriage rate were compared between groups.

Results: Number of total and mature oocytes (MII), two pronuclei (2PN), total embryos, transferred embryos, quality of transferred embryos, and fertilization rate did not differ significantly between two groups. So there were no significant differences between groups in chemical, clinical and ongoing pregnancy rate, implantation rate, and miscarriage rate

Conclusion: our result showed in normal IVF patients with normal endometrial thickness, the intrauterine infusion of G-CSF did not improve pregnancy outcomes.

Key words: G-CSF, In vitro fertilization, Pregnancy rates, Randomized controlled trial.

Registration ID in IRCT: IRCT201508236420N13

Introduction

Despite major progression in assisted reproductive techniques, the implantation rates still remain relatively low. "Successful implantation needs good quality embryo, receptive endometrium, and good embryo transfer technique" (1). The receptive endometrium is a healthy uterine milieu that support the transformation of endometrial cells into decidua cells, invasion of blastocysts, and rapid growth of placenta (2). This process is facilitated by immune cells, growth factors, cytokines, and hormonal changes (3, 4).

Immunological mechanisms in the endometrium are very important and crucial in implantation process (5). Granulocyte colony-stimulating factor (G-CSF) is a hematopoietic

cytokine produced in maternofetal interface during embryo implantation and early pregnancy suggesting it may play a role in decidua and placental function (6). It stimulates granulocyte proliferation and differentiation (7).

Some studies have demonstrated that systemic administration of G-CSF in women with recurrent spontaneous abortions and repetitive implantation failures improves pregnancy outcomes (8-10). Also, G-CSF transvaginal infusion successfully were used in women with thin endometrial thickness (<7 mm) and repetitive implantation failures recently (11, 12). It should be due to improving endometrial thickness after G-CSF administration (13). Eftekhar *et al* showed intrauterine G-CSF administration improved chemical and clinical pregnancy rate in

infertile women with thin endometrium in frozen-thawed embryo transfer cycles but they found in their study endometrial thickness in their patients did not increase (6). Fewer studies have examined the G-CSF effect in women with normal endometrial thickness. Barad *et al* demonstrated that intrauterine G-CSF infusion in fresh embryo transfer cycles in women underwent IVF treatment did not affect on endometrial thickness, implantation, and clinical pregnancy rates (7). Therefore, it is hypothesized that G-CSF inflammatory and immunological effects may improve the implantation rate and endometrial receptivity in infertile women.

In this study, G-CSF effect on implantation and pregnancy rates in normal infertile women were investigated.

Materials and methods

This randomized clinical trial was performed between March and September 2015 in Yazd Research and Clinical Center for Infertility. Study protocol was approved by Ethics Committee of Research and Clinical Center for Infertility, Yazd, Iran.

100 infertile women aged 18-40 years old with normal endometrial thickness who were candidate for IVF were participated in this study (n=50 each group). Women with repeated implantation failure (RIF) (failure to conceive following two embryo transfer cycles, or cumulative transfer of >10 good-quality embryos), endocrine disorders, severe endometriosis, congenital or acquired uterine anomaly (uterine polyp, sub mucosal myoma, intrauterine adhesions), contraindication for G-CSF (renal disease, sickle cell disease, or malignancy history, upper respiratory tract infection, pneumonia, or chronic neutropenia) were excluded.

After receiving informed written consent from all participants and their spouse, according to enveloped pocket method women were allocated randomly in two groups (G-CSF and control group). Standard agonist or antagonist protocol was used for ovarian stimulation in groups (14). When at least two follicles achieved 17 mm diameter, Human

chorionic gonadotropin (hCG) (Choriomon 10000 IU, IBSA Institute, Switzerland) was administered for final oocyte maturation. Transvaginal oocyte retrieval was performed 36 hr after hCG injection. The oocytes were fertilized by intracytoplasmic sperm injection method.

In G-CSF group at the day of oocyte retrieval, after oocytes collection, 300 mg G-CSF (300 µg/mL, Zahravi Co, Tehran, Iran) was administered by slow transcervical intrauterine infusion with IUI catheter (AINSEGREGY, RIMOS, Italy) (6). In controls, the cycle were continued without G-CSF infusion. In all patients, 2-3 embryos were transferred by using embryo transfer catheter (Cook USA), two days after oocyte retrieval.

Pregnancy outcomes were assessed based on positive serum βhCG test (chemical pregnancy), 14 days after embryo transfer and observation of gestational sac on transvaginal ultrasound examination (clinical pregnancy), three weeks after positive serum βhCG. Implantation rate was assessed by the number of gestational sacs divided by the number of transferred embryos in each group. The ongoing pregnancy rate was defined as the presence of fetal heart activity by ultrasonography after 12 wks of pregnancy. The miscarriage rate was assessed by the number of miscarriages before 20 wks gestation per number of women with positive βhCG test.

Statistical analysis

Data were analyzed using Statistical Package for the Social Sciences 20.0 (SPSS, SPSS Inc, Chicago, Illinois). With 95% confidence level, power of 80%, $p_1=20\%$, $p_2=45\%$ and the sample size=50 in each group was considered. Continuous data were presented as mean±SD and assessed by independent Student's *t*-test or Mann-Whitney test. Qualitative data were compared by χ^2 or Fisher exact test. $P<0.05$ was considered significant.

Results

Totally, 113 normal infertile women were participated in this study. 13 women were

excluded and finally data of 100 women analyzed (Figure 1). Demographic characteristics of participants are presented in Table I. Two study groups matched for age, etiology, duration, and infertility type, number of previous embryo transfer cycles, and basal FSH level. There were no significant differences in cycle duration days, protocol type and gonadotropins dose, hCG day estradiol, serum progesterone level, and

endometrial thickness between groups (Table II). Number of total and mature oocytes (MII), two pronuclei (2PN), total embryos, transferred embryos, quality of transferred embryos, and fertilization rate did not differ significantly between G-CSF group and controls. There were no significant differences between groups in chemical, clinical and ongoing pregnancy rate, implantation rate, and miscarriage rate (Table III).

Table I. Demographic characteristics of participants in two groups (n=50/each)

| Characteristics | G-CSF Group | Control Group | p-value |
|---------------------------------------|---------------|---------------|-------------------|
| Age (Y) *# | 31.24 ± 4.25 | 31.36 ± 5.15 | 0.89 |
| Basal FSH level (day 3 FSH) (IU/L) *# | 6.23 ± 2.20 | 6.36 ± 1.90 | 0.76 |
| Previous embryo transfer (n) *# | 0.36 ± 0.66 | 0.54 ± 0.88 | 0.25 |
| Duration of infertility (Y) *# | 6.5900 ± 4.09 | 7.29 ± 4.93 | 0.66 ^a |
| Type of infertility **\$ | | | 0.79 |
| Primary | 40 (80.0) | 41 (82.0) | |
| Secondary | 10 (20.0) | 9 (18.0) | |
| Etiology of infertility **\$ | | | 0.80 |
| Male | 29 (58.0) | 31 (62.0) | |
| Ovarian factor | 10 (20.0) | 8 (16.0) | |
| Tubal | 5 (10.0) | 6 (12.0) | |
| Unexplained | 6 (12.0) | 5 (10.0) | |

* Data are presented as mean±SD.

** Data are presented as n(%).

Student t-test

\$ Chi-square test

a: mann-whitny

FSH: Follicle-stimulating hormone

G-CSF: granulocyte colony-stimulating factor.

Table II. Cycle characteristics of study patients in two groups (n=50/each)

| Characteristics | G-CSF Group | Control Group | p-value |
|--------------------------------------|-------------------|------------------|-------------------|
| hCG day estradiol (pg/ml) * | 1538.36 ± 1148.41 | 1757.57 ± 939.52 | 0.1 ^a |
| hCG day progesterone (pg/ml) * | 0.59 ± 0.48 | 0.66 ± 0.46 | 0.25 ^a |
| hCG day endometrial thickness(mm) ** | 9.46 ± 1.71 | 9.62 ± 1.51 | 0.62 |
| Duration of stimulation(days) ** | 12.16 ± 1.69 | 12.28 ± 1.78 | 0.73 |
| Gonadotropin dose (IU) * | 1675.75 ± 629 | 1819.74 ± 656 | 0.16 ^a |
| Protocol type ** | | | 1.00 ^b |
| Antagonist | 49 (98.0) | 49 (98.0) | |
| Agonist | 1 (2.0) | 1 (2.0) | |

* Data are presented as mean±SD.

** Data are presented as n(%).

Student t-test

\$ Chi-square test

a: mann-whitny

b: Fisher exact-test

G-CSF: granulocyte colony-stimulating factor

hCG=human chorionic gonadotropin

Note: Cycle characteristics were compared among the study group and the control group with the analysis of variance (ANOVA). If significant differences were found, each clinical diagnosis was compared with the control group to determine pairwise significance with Student's t-test.

Table III. IVF outcomes of study patients in two groups (n=50/each)

| Characteristics | G-CSF Group | Control Group | p-value |
|----------------------------------|--------------|---------------|---------|
| Oocytes Number ** | 9.96 ± 4.25 | 10.98 ± 5.12 | 0.38 |
| Mature Oocytes Number ** | 8.26 ± 4.08 | 8.82 ± 4.73 | 0.64 |
| 2PN Number ** | 5.12 ± 3.329 | 5.58 ± 3.66 | 0.67 |
| Embryos Number ** | 4.64 ± 2.98 | 5.14 ± 3.64 | 0.84 |
| Transferred Embryos Number ** | 2.14 ± 0.70 | 2.10 ± .058 | 0.5 |
| Fertilization rate ** | 0.63 ± 0.25 | 0.66 ± 0.25 | 0.52 |
| Implantation rate ** | 0.12 ± 0.29 | 0.10 ± 0.24 | 0.98 |
| Chemical pregnancy **\$ | 9 (18.00) | 10 (20.00) | 0.79 |
| Clinical pregnancy **\$ | 9 (18.00) | 9 (18.00) | 1.00 |
| Ongoing pregnancy **\$ | 7 (14.00) | 7 (14.00) | 1.00 |
| Miscarriage rate **\$ | 2 (22.2) | 3 (30.0) | 0.71 |
| Transferred Embryos quality **\$ | | | 0.27 |
| A | 19 (38.0) | 17 (34.0) | |
| B | 28 (56.0) | 25 (50.0) | |
| C | 3 (6.0) | 8 (16.0) | |

* Data are presented as mean±SD. ** Data are presented as n(%).

mann-whitny

\$ Chi-square test

G-CSF: granulocyte colony-stimulating factor

2PN= Two pronuclei

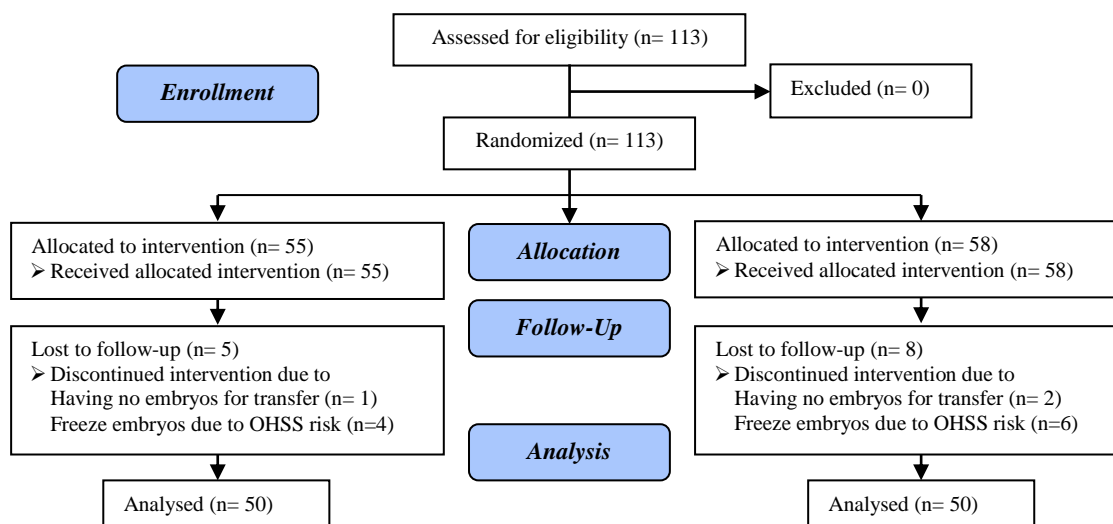


Figure 1. Consort flow diagram

Discussion

In the present study, G-CSF effect on implantation and pregnancy rates in normal infertile women candidate for IVF treatment were evaluated. It was found that pregnancy outcomes did not improve significantly after intra uterine G-CSF infusion in women with normal endometrial proliferation. G-CSF is a factor that rising the synchronization between uterine environment and embryo development during endometrial remodeling (15, 16). Previous studies have demonstrated that G-CSF can treat RIF and recurrent miscarriage by improving the inflammation process and endometrial receptivity (8-11).

In 2011, Gleicher *et al* represented a new option for thin endometrium treatment. They evaluated the G-CSF effect in four patients who underwent IVF that endometrial thickness had not increased with routine treatment. They reported successful endometrial thickness to at least 7 mm after G-CSF uterine infusion and all patients were conceived (12). Also, Tehraninejad *et al* in a study on fresh embryo transfer cycle in women with history of IVF cycle cancellation because of thin endometrium showed that the pregnancy chance and endometrial thickness was increased after G-CSF infusion (13).

While Eftekhari *et al* in their non-randomized clinical trial demonstrated that G-CSF improved implantation and clinical

pregnancy rate in infertile women with thin endometrium in frozen-thawed embryo transfer cycles without improving endometrial thickness" (6).

In the present study endometrial thickness in participants was in normal range (7-14 mm). We did not obtain significant differences between two groups in terms of chemical, clinical, ongoing pregnancy, implantation, and miscarriage rates. There are nor numerous studies on the effect of G-CSF in women with normal endometrial thickness.

Similar to our results, Barad *et al* showed intrauterine G-CSF infusion in fresh embryo transfer cycles in IVF women with normal endometrial thickness do not affect endometrial thickness, implantation, and clinical pregnancy rates (7). Therefore it seems when there is evidence of impaired endometrial receptivity, like low thickness, RIF, or early miscarriage, G-CSF has beneficial effects on pregnancy and implantation rates. Transvaginal ultrasound assessment of endometrium can be used to determine preparation of the endometrium prior to embryo transfer. It is unclear that these assessments are helpful in determining whether the endometrium is optimally prepared (17).

A systematic review and meta-analysis of 14 studies shown that there may be a relationship between endometrial thickness and pregnancy, but implantation is more

complex than be determined by single ultrasound (18). Now, during the treatment an infertile couple, the Endometrial Receptivity Array (ERA test) leads to the evaluation, at molecular level, of the endometrial factors (19). Therefore, it is suggested that for better G-CSF evaluation effects on endometrial receptivity and implantation, the molecular G-CSF effects e.g. integrins, proteomics, transcriptomics and ERA test be used in further studies (19, 20).

In summary, we showed that, in normal IVF women who had normal endometrium, the intrauterine infusion of G-CSF did not improve pregnancy outcomes. The available evidence does not support routine use of G-CSF in normal IVF women with normal endometrial thickness. More randomized controlled trials is needed for comparison of G-CSF effects on women with thin and normal endometrial thickness.

Acknowledgments

The financial supporter was Research and Clinical Center of Infertility, Shahid Sadoughi University of Medical Sciences, Yazd, Iran, Special thanks to M. Gandom, A. Kermaninejad and Z. Sheibani.

Conflict of interest

The authors have no conflicts of interest related to the subject matter or materials discussed in this article.

References

- Gardner DK, Weissman A, Howles CM, Shoham Z, editors. Textbook of Assisted Reproductive Techniques. 4th Ed. Clinical Perspectives. CRC press; 2012.
- Zenclussen AC, Hämmerling GJ. Cellular regulation of the uterine microenvironment that enables embryo implantation. *Frontiers in immunology* 2015; 6: 321.
- Kunicki M, Łukaszuk K, Wocławek-Potocka I, Liss J, Kulwikowska P, Szczypkańska J. Evaluation of granulocyte colony-stimulating factor effects on treatment-resistant thin endometrium in women undergoing in vitro fertilization. *BioMed Res Int* 2014; 2014: 913235.
- Psychoyos A. Uterine receptivity for nidation. *Ann N Y Acad Sci* 1986; 476: 36-42.
- Sharkey A. Cytokines and implantation. *Rev Reprod* 1998; 3: 52-61.
- Eftekhari M, Sayadi M, Arabjahvani F. Transvaginal perfusion of G-CSF for infertile women with thin endometrium in frozen ET program: A non-randomized clinical trial. *Iran J Reprod Med* 2014; 12: 661.
- Barad DH, Yu Y, Kushnir VA, Shohat-Tal A, Lazzaroni E, Lee HJ, et al. A randomized clinical trial of endometrial perfusion with granulocyte colony-stimulating factor in in vitro fertilization cycles: impact on endometrial thickness and clinical pregnancy rates. *Fertil Steril* 2014; 101:710-715.
- Santjohanser C, Knieper C, Franz C, Hirv K, Meri O, Schleyer M, et al. Granulocyte-colony stimulating factor as treatment option in patients with recurrent miscarriage. *Arch Immunol Ther Exp (Warsz)* 2013; 61: 159-164.
- Scarpellini F, Sbracia M. G-CSF treatment improves IVF outcome in women with recurrent implantation failure in IVF. *J Reprod Immunol* 2012; 94: 103.
- Würfel W. Treatment with granulocyte colony-stimulating factor in patients with repetitive implantation failures and/or recurrent spontaneous abortions. *J Reprod Immunol* 2015; 108: 123-135.
- Zeyneloglu HB, Onalan G, Durak T, Alyazici I, Unal E. Granulocyte macrophage colony stimulating factor (G-CSF) administration for art patients with repeated implantation failure (RIF): which route is best? *Fertil Steril* 2013; 100: 291-292.
- Gleicher N, Vidali A, Barad DH. Successful treatment of unresponsive thin endometrium. *Fertil Steril* 2011; 95: 2123.
- Tehranejad E, Tanha FD, Asadi E, Kamali K, Azimnikoo E, Rezayof E. G-CSF Intrauterine for Thin Endometrium, and Pregnancy Outcome. *J Fam Reprod Health* 2015; 9: 107.
- Lai Q, Zhang H, Zhu G, Li Y, Jin L, He L, et al. Comparison of the GnRH agonist and antagonist protocol on the same patients in assisted reproduction during controlled ovarian stimulation cycles. *Int J Clin Exp Pathol* 2013; 6: 1903-1910.
- Lucena E, Moreno-Ortiz H. Granulocyte colony-stimulating factor (G-CSF): a mediator in endometrial receptivity for a patient with polycystic ovary (PCO) undergoing in vitro maturation (IVM). *BMJ Case Reports* 2013; 2013: bcr2012008115.
- Li Y, Pan P, Chen X, Li L, Li Y, Yang D. Granulocyte colony-stimulating factor administration for infertile women with thin endometrium in frozen embryo transfer program. *Reprod Sci* 2014; 21: 381-385.
- Edgell TA, Rombauts LJ, Salamonsen LA. Assessing receptivity in the endometrium: the need for a rapid, non-invasive test. *Reprod Biomed Online* 2013; 27: 486-496.
- Momeni M, Rahbar MH, Kovanci E. A meta-analysis of the relationship between endometrial thickness and outcome of in vitro fertilization cycles. *J Hum*

Reprod Sci 2011; 4: 130.

19. Garrido-Gómez T, Ruiz-Alonso M, Blesa D, Diaz-Gimeno P, Vilella F, Simón C. Profiling the gene signature of endometrial receptivity: clinical results.

Fertil Steril 2013; 99:1078-1085.

20. Vilella F, Ramirez LB, Simón C. Lipidomics as an emerging tool to predict endometrial receptivity. *Fertil Steril* 2013; 99: 1100-1106.